



State of Rhode Island and Providence Plantations  
**Department of State | Office of the Secretary of State**  
Nellie M. Gorbea, *Secretary of State*

September 18, 2018

LUX ENERGY LLC  
166 VALLEY STREET  
BUILDING 6M, SUITE 103  
PROVIDENCE, RI 02909

RECEIVED  
SECRETARY OF STATE  
CORPORATIONS DIV  
2018 SEP 28 PM 12:27

RE: Entity ID # 001677226  
LUX ENERGY LLC

Dear Sir or Madam:

Your limited liability company has failed to maintain a Resident Office in this state as evidenced by undeliverable and returned correspondence which was sent to the Resident Agent, JESSE REID at the Resident Office, 166 VALLEY STREET, BLDG 6M, SUITE 103, PROVIDENCE, RI 02909.

Pursuant to the provisions set forth in Section 7-16-41 of the General Laws of the State of Rhode Island, the Certificate of Organization/Registration of the above-named entity will be revoked after 60 days from the date of this notice for failure to maintain a resident office within this state.

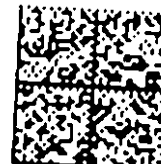
To file a Change of Resident Agent/Office form online using Visa, MasterCard, American Express or Discover, visit [www.sos.ri.gov/business](http://www.sos.ri.gov/business). If you do not have a CID and PIN or have forgotten your CID and/or PIN, please contact us at [corp\\_pin@sos.ri.gov](mailto:corp_pin@sos.ri.gov).

If you prefer to use cash or check, visit [www.sos.ri.gov/business](http://www.sos.ri.gov/business) to download a form. You can mail the form to us with your payment or visit our office to file in person. Of course, we will provide a hardcopy of the Change of Agent/Office form upon request.

State of Rhode Island and Providence Plantations  
**Department of State | Business Services Division**  
Nellie M. Gorbea, *Secretary of State*  
148 W. River Street, Providence, RI 02904-2615

Filed with the Office of the Secretary of State, Division

PRESORTED  
FIRST CLASS



US POSTAGE >> PITNEY BOWES  
ZIP 02885 \$ 000.37<sup>8</sup>  
02 4M  
0000335880 SEP 21 2018

NIXIE

015 FEB 1260

0009/26/18

RETURN TO SENDER  
NOT DELIVERABLE AS ADDRESSED  
UNABLE TO FORWARD

EC: 02904261599

\*1368-03865-26-31

029042615  
HHH155B 01

